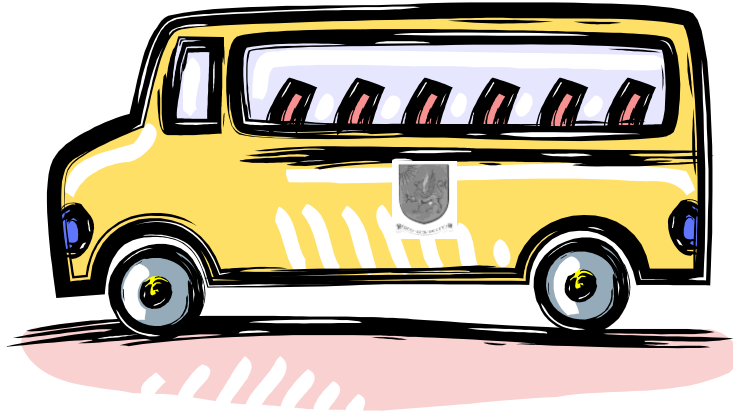


RENDCOMB COLLEGE SCHOOL BUSES FOR SEPTEMBER 2010

2nd July 2010



Dear Parents

It would be very helpful if you are interested in using our School Buses, if you could fill in and **RETURN THE ATTACHED SHEET BY 30TH JULY 2010 OR EMAIL/FAX ME YOUR RESPONSE.**

We will then process the information and come up with some feasible and cost effective routes to Rendcomb. **IN ORDER TO MAKE IT VIABLE, THERE NEEDS TO BE A MINIMUM NUMBER OF PUPILS USING EACH ROUTE.**

We are continually asked to try and shorten the traveling times, in order that pupils do not have too long a day. To implement this request, we ask you to remember that pick up points will be arranged along main routes and *not* around individual villages.

A new provisional bus timetable with costs will be sent out to all interested parties by the middle of August 2010.

Yours faithfully

Carol Endersby
Bursar's Secretary

PLEASE COMPLETE AND RETURN

PLEASE RESPOND: by Friday 30th July 2010

To: Mrs. Carol Endersby,
Rendcomb College,
Rendcomb
Gloucestershire,
GL7 7HA

Fax: 01285 831121 or email your comments to
bursar.secretary@rendcomb.gloucs.sch.uk

Please tick ✓

Yes I am interested in using the school bus regularly ONE WAY

Yes I am interested in using the school bus regularly RETURN

Yes I am interested in using the bus occasionally and understand that this would be based on places being available on that day, by arrangement with the Bursar's Secretary. **PLEASE NOTE THAT USING THE BUS MORE THAN THREE TIMES PER WEEK WILL MEAN PURCHASING A ONE WAY PASS.**

I would like my pickup /drop off point to be:

Pick - up Point.....

Town / Village:.....

.....

Pupils Name/s.....

Address.....

.....

Daytime Contact Telephone Number

Further Comments: